

# NORTH GILA VALLEY IRRIGATION DISTRICT

## PORTIONS OF TOWNSHIP 7 SOUTH AND TOWNSHIP 8 SOUTH, RANGE 22 WEST, G.S.R.B.&M.

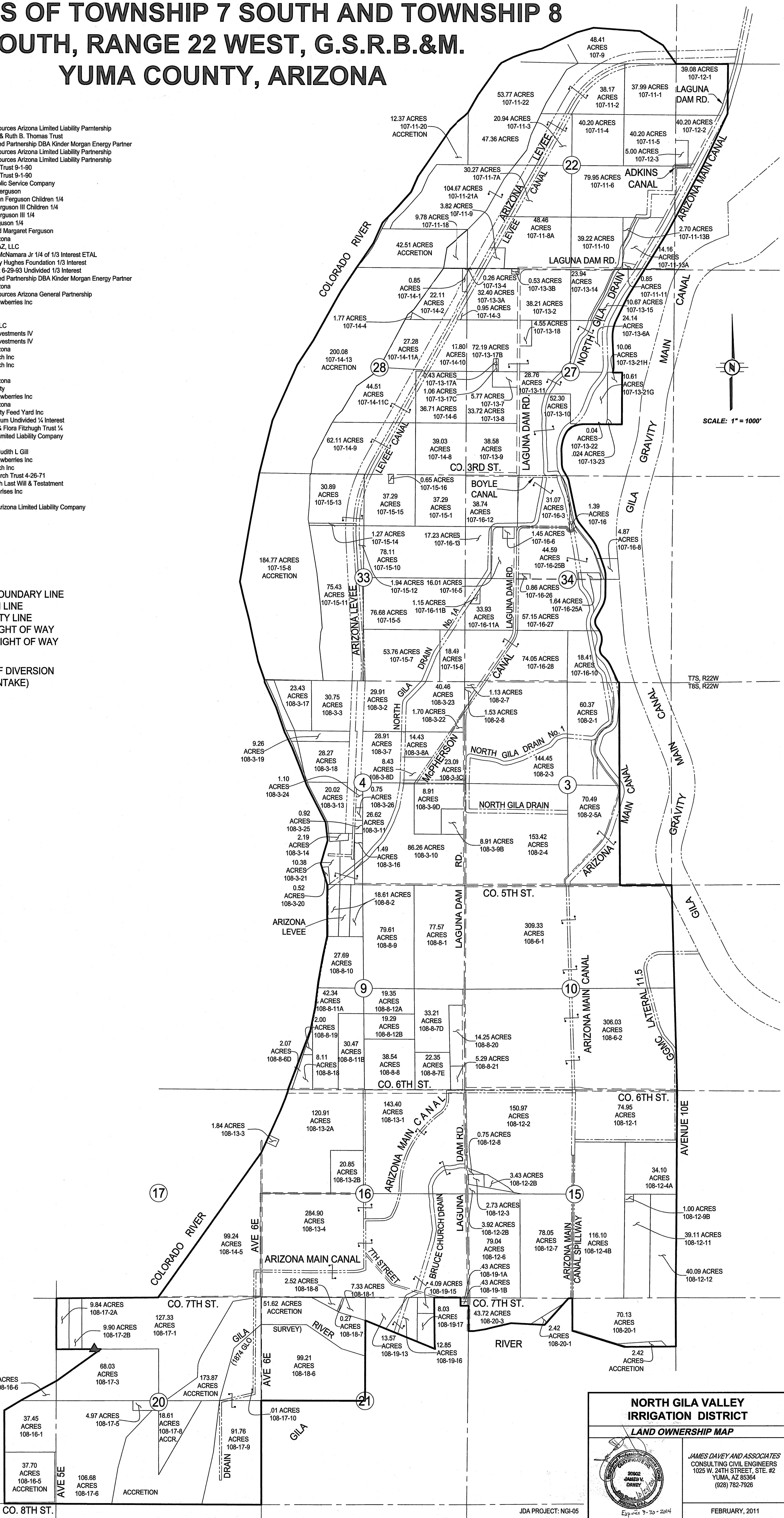
### YUMA COUNTY, ARIZONA

- 107 09 Accretion
- 107 11 01 Nest Egg Az LTD Partnership
- 107 11 02 W. E. & R. L. Harrison Undivided 1/2 Interest
- 107 11 03 WEH Properties Limited Partnership Undivided 1/2
- 107 11 04 Donna R. Black Trust
- 107 11 05 Donna R. Black Trust
- 107 11 06 Cletis C. Land Living Trust Undivided 1/3 Interest
- 107 11 07 Pratt Trust 121-84 Undivided 1/3 Interest
- 107 11 08 Cooley Family Investment Arizona, Limited Liability Company
- 107 11 07 A Cooley Family Investment Arizona, Limited Liability Company
- 107 11 08 A Cooley Family Investment Arizona, Limited Liability Company
- 107 11 09 Jeffy S. & Charlotte L. Moore
- 107 11 10 Cooley Family Investment Arizona, Limited Liability Company
- 107 11 11 Edward R. Chavez
- 107 11 13A ELH Farms Arizona Limited Partnership
- 107 11 13B Cooley Family Investment Arizona, Limited Liability Company
- 107 11 18 Olt Trust 1976
- 107 11 20 Accretion
- 107 11 21 A Pasque Partners Arizona Limited Liability Partnership Undivided 76 Interest
- 107 11 21 A Fortuna Farms Arizona Partnership Undivided 24 Interest
- 107 11 22 Accretion
- 107 12 01 Nest Egg Az Limited Partnership
- 107 12 02 Cletis C. Land Living Trust Undivided 1/3 Interest
- 107 12 03 Pratt Trust 121-84 Undivided 1/3 Interest
- 107 12 03 Cletis C. Land Living Trust Undivided 1/3 Interest
- 107 12 03 Pratt Trust 121-84 Undivided 1/3 Interest
- 107 12 02 Land Trust 2-1-88 Undivided 1/3 Interest
- 107 12 03 Olt Family Arizona Limited Partnership
- 107 13 03A Laguna Farms Incorporated
- 107 13 03B Dave Goodwin
- 107 13 04 Joe Papa Farm Limited Liability Company
- 107 13 06A Laguna Farms
- 107 13 07 John T. & Mary J. Ott Trust 6-1-79
- 107 13 08 Orvel E. & Pamela K. Dewhirst Trust 7-4-04
- 107 13 09 Laguna Farms Arizona Limited Partnership
- 107 13 10 Gill Farms Arizona Limited Liability Company
- 107 13 11 Gill Farms Arizona Limited Liability Company
- 107 13 14 Olt Family Arizona Limited Partnership
- 107 13 15 John T. & Mary Ott Trust 6-1-79
- 107 13 17A Steven Earl & Claessee Ferguson
- 107 13 17B Pauline Ott
- 107 13 17C Pauline Ott
- 107 13 18 Jud T. and Eunice L. Ott Trust
- 107 13 21G Danny L. & Susan M Bryant
- 107 13 21H Danny L. & Susan M Bryant
- 107 13 22 Donald K. Spencer & Linda L. Wyatt
- 107 13 23 John R. & Bridgett B. Allen
- 107 14 01 Joe Papa Farm Limited Liability Company
- 107 14 02 Ferguson Marital Election Trust 74.1383
- 107 14 03 Laguna Farms Arizona Limited Partnership
- 107 14 04 Ferguson Marital Election Trust 74.1383
- 107 14 06 Orvel E. & Pamela K. Dewhirst Trust 7-4-04
- 107 14 08 Laguna Farms Arizona Limited Partnership
- 107 14 09 EAL Farms Limited Partnership
- 107 14 10 Carl F. & Pauline L. Ott
- 107 14 11A Pauline F. Ott Sole and Separate 1/2
- 107 14 11C Olt Trust
- 107 14 13 Accretion
- 107 15 01 Laguna Farms Arizona Limited Partnership
- 107 15 05 Frank M Ferguson III Children 1/2
- 107 15 06 Steven Ferguson Children 1/2
- 107 15 06 Steven Ferguson Children 1/4
- 107 15 07 Frank M Ferguson III Children 1/4
- 107 15 08 Steven Ferguson 1/4
- 107 15 07 Thomas Richard & Mary Smith Trust 7-7-02
- 107 15 08 Accretion
- 107 15 10 Laguna Farms Arizona Limited Partnership
- 107 15 11 Ferguson Frank M III Children 1/10
- 107 15 11 Ferguson Steven Children 1/10
- 107 15 12 ETAL 4/5
- 107 15 12 Laguna Farms Arizona Limited Partnership
- 107 15 13 EAL Farms Limited Partnership
- 107 15 14 Steven Ferguson Children 1/4
- 107 15 14 Frank M Ferguson III Children 1/4
- 107 15 14 Frank M Ferguson 1/4
- 107 15 15 Steven Ferguson 1/4
- 107 16 United States of America
- 107 16 03 Gill Farms Arizona Limited Liability Company
- 107 16 05 Laguna Farms Arizona Limited Partnership
- 107 16 06 Laguna Farms Arizona Limited Partnership
- 107 16 08 North Gila Valley Irrigation District
- 107 16 10 Thomas H McNamara Jr 1/4 of 1/3 Interest ETAL
- 107 16 10 Church Sally Hughes Foundation 1/3 Interest
- 107 16 10 Taylor Trust 6-29-93 Undivided 1/3 Interest
- 107 16 11A Gail Ferguson Trust
- 107 16 11B Rudy S. Parra
- 107 16 12 Laguna Farms Arizona Limited Partnership
- 107 16 13 KRW Farms Inc.
- 107 16 25A Gill Revocable Trust 2-22-94
- 107 16 25B Gill Revocable Trust 2-22-94
- 107 16 26 Joseph M. & Jeanne Chavez
- 107 16 27 Ferguson Marital Election Trust 1/2
- 107 16 28 Ferguson Family Trust 1/2
- 107 16 28 Steven Ferguson Children 1/4
- 107 16 28 Frank M Ferguson III Children 1/4
- 107 16 28 Frank M Ferguson 1/4
- 107 16 28 Steven Ferguson 1/4
- 108 02 01 Thomas H McNamara Jr 1/4 of 1/3 Interest ETAL
- 108 02 01 Church Sally Hughes Foundation 1/3 Interest
- 108 02 03 Taylor Trust 6-29-93 Undivided 1/3 Interest
- 108 02 03 Thomas H McNamara Jr 1/4 of 1/3 Interest ETAL
- 108 02 04 Church Sally Hughes Foundation 1/3 Interest
- 108 02 04 Taylor Trust 6-29-93 Undivided 1/3 Interest
- 108 02 04 Thomas H McNamara Jr 1/4 of 1/3 Interest ETAL
- 108 02 05A Church Sally Hughes Foundation 1/3 Interest
- 108 02 05A Taylor Trust 6-29-93 Undivided 1/3 Interest
- 108 03 02 Ferguson Marital Election Trust 74.1383 & Ferguson Family Trust 28.8617
- 108 03 03 Ferguson Frank M III Children 1/10
- 108 03 03 Ferguson Steven Children 1/10
- 108 03 07 ETAL 4/5
- 108 03 07 Ferguson Marital Election Trust 74.1383 & Ferguson Family Trust 28.8617
- 108 03 08A Frank M. III & Margaret M. Ferguson
- 108 03 08C Frank M. III Children Ferguson 1/2
- 108 03 08D Steven Children Ferguson 1/2
- 108 03 08D Frank M. III & Ferguson Steven E. Ferguson
- 108 03 08B Townsend Trust 4-30-96
- 108 03 09 Velma M. Townsend Trust 1-26-98
- 108 03 10 North Gila Homeplace
- 108 03 11 Jack Ramsey Farms Incorporated Arizona Corporation
- 108 03 13 Harrison Trust 1-1-91
- 108 03 14 Richard E. Taylor
- 108 03 16 Jack Ramsey Farms Incorporated Arizona Corporation
- 108 03 17 Ferguson Frank M III Children 1/10
- 108 03 17 Ferguson Steven Children 1/10
- 108 03 17 ETAL 4/5
- 108 03 18 Harrison Trust 1-1-91
- 108 03 19 Ferguson Frank M III Children 1/10
- 108 03 19 Ferguson Steven Children 1/10
- 108 03 19 ETAL 4/5
- 108 03 20 Emert E. Sr. & Marilyn L. Knaresboro
- 108 03 21 Jack Ramsey Farms Incorporated Arizona Corporation
- 108 03 22 Patrick R. Ferguson
- 108 03 23 P & N Ferguson Trust 9-13-95
- 108 03 24 Jack Ramsey Farms Incorporated Arizona Corporation
- 108 03 25 Jack Ramsey Farms Incorporated Arizona Corporation
- 108 03 26 Virginia Ariza Trust 9-1-98
- 108 06 01 James H. Dunn Arizona
- 108 06 02 James B. Harris 1/2
- 108 08 01 Robert A. Harris & Diane B. Snell Trust 1/2
- 108 08 01 Thomas H McNamara Jr 1/4 of 1/3 Interest ETAL
- 108 08 01 Church Sally Hughes Foundation 1/3 Interest
- 108 08 02 Taylor Trust 6-29-93 Undivided 1/3 Interest
- 108 08 02 Jack Ramsey Farms Incorporated Arizona Corporation
- 108 08 06D Citizens Title & Trust #563
- 108 08 07D Pedro Tejada
- 108 08 07E Rose Montoya
- 108 08 08 Yuma 305 AZ, LLC
- 108 08 09 Thomas H McNamara Jr 1/4 of 1/3 Interest ETAL
- 108 08 09 Church Sally Hughes Foundation 1/3 Interest
- 108 08 10 Taylor Trust 6-29-93 Undivided 1/3 Interest
- 108 08 10 Thomas H McNamara Jr 1/4 of 1/3 Interest ETAL
- 108 08 10 Church Sally Hughes Foundation 1/3 Interest
- 108 08 11A Taylor Trust 6-29-93 Undivided 1/3 Interest
- 108 08 11A Thomas H McNamara Jr 1/4 of 1/3 Interest ETAL
- 108 08 11A Church Sally Hughes Foundation 1/3 Interest
- 108 08 11A Taylor Trust 6-29-93 Undivided 1/3 Interest
- 108 08 11B Yuma 305 AZ, LLC
- 108 08 12A Thomas H McNamara Jr 1/4 of 1/3 Interest ETAL
- 108 08 12A Church Sally Hughes Foundation 1/3 Interest
- 108 08 12A Taylor Trust 6-29-93 Undivided 1/3 Interest
- 108 08 12B Yuma 305 AZ, LLC
- 108 08 18 Larry Ott
- 108 08 19 Larry Ott
- 108 12 01 Lakota Resources Arizona Limited Liability Partnership
- 108 12 02 Thomas Family Limited
- 108 12 03 SFPP Limited Partnership DBA Kinder Morgan Energy Partner
- 108 12 04A Lakota Resources Arizona Limited Liability Partnership
- 108 12 04B Lakota Resources Arizona Limited Liability Partnership

- 108 08 18 Larry Ott
- 108 08 19 Larry Ott
- 108 12 01 Lakota Resources Arizona Limited Liability Partnership
- 108 12 02 Charles W. & Ruth B. Thomas Trust
- 108 12 03 SFPP Limited Partnership DBA Kinder Morgan Energy Partner
- 108 12 04A Lakota Resources Arizona Limited Liability Partnership
- 108 12 04B Lakota Resources Arizona Limited Liability Partnership
- 108 12 06 Czajkowski Trust 9-1-90
- 108 12 07 Arizona Public Service Company
- 108 12 08 Steven E. Ferguson
- 108 12 11 Frank Steven Ferguson Children 1/4
- 108 12 11 Frank N. Ferguson III Children 1/4
- 108 12 11 Frank N. Ferguson III 1/4
- 108 12 11 Steven Ferguson 1/4
- 108 12 12 Frank II and Margaret Ferguson
- 108 13 01 State of Arizona
- 108 13 02A Yuma 305 AZ, LLC
- 108 13 02B Thomas H McNamara Jr 1/4 of 1/3 Interest ETAL
- 108 13 02B Church Sally Hughes Foundation 1/3 Interest
- 108 13 02B Taylor Trust 6-29-93 Undivided 1/3 Interest
- 108 13 03 SFPP Limited Partnership DBA Kinder Morgan Energy Partner
- 108 13 04 State of Arizona
- 108 14 05 Lakota Resources Arizona General Partnership
- 108 16 01 Salinas Strawberries Inc
- 108 16 05 Accretion
- 108 16 06 Accretion
- 108 17 01 Gunsho II LLC
- 108 17 02A Amireddy Investments IV
- 108 17 02B Amireddy Investments IV
- 108 17 03 State of Arizona
- 108 17 05 Bruce Church Inc
- 108 17 06 Bruce Church Inc
- 108 17 08 Accretion
- 108 17 09 State of Arizona
- 108 17 10 Yuma County
- 108 18 01 Salinas Strawberries Inc
- 108 18 05 State of Arizona
- 108 18 07 Yuma County Feed Yard Inc
- 108 18 07 Meri-Le Collum Undivided 1/4 Interest
- 108 18 08 Edwin Lee & Flora Fitzhugh Trust 1/4
- 108 18 08 Gunsho II Limited Liability Company
- 108 19 01A Lydia Gill
- 108 19 01B Gilbert P. & Judith L. Gill
- 108 19 13 Salinas Strawberries Inc
- 108 19 15 Bruce Church Inc
- 108 19 16 Irene H Church Trust 4-26-71
- 108 19 16 Irene Church Last Will & Testament
- 108 19 17 MCT Enterprises Inc
- 108 20 01 Accretion
- 108 20 03 Olt Farms Arizona Limited Liability Company

**LEGEND**

- NGVID BOUNDARY LINE
- - - SECTION LINE
- PROPERTY LINE
- - - ROAD RIGHT OF WAY
- - - CANAL RIGHT OF WAY
- ▲ POINT OF DIVERSION (RIVER INTAKE)



**NORTH GILA VALLEY IRRIGATION DISTRICT**

**LAND OWNERSHIP MAP**

**JAMES DAVEY AND ASSOCIATES**  
CONSULTING CIVIL ENGINEERS  
1025 W. 24TH STREET, STE. #2  
YUMA, AZ 85364  
(928) 782-7926

JDA PROJECT: NGI-05

February 9, 2014

FEBRUARY, 2011